

# DOWNLOADER

**MOTORSCOPE**  
THE RELIABLE ELECTRIC MOTOR GUARD



## What is the MOTORSCOPE Downloader ?

The Motorscope Downloader is a link between the Optimizer and the PC. The Downloader uses a USB port to transfer data from the Optimizer to the PC.



NOTE: The Motorscope Downloader Software and drivers are compatible with Windows 98 / 2000 / XP / 2003 / VISTA.

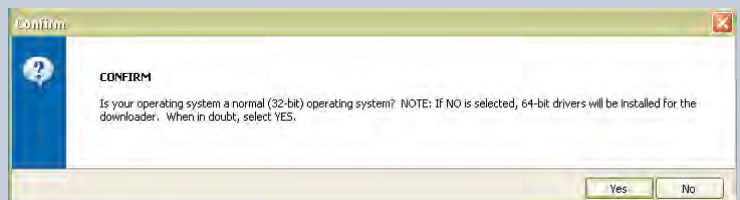
## Software installation

Step 1 Insert the CD marked "Downloader drivers and software".

Step 2 The Welcome screen will appear and the Installation Wizard will guide you through the software installation :



NOTE: After the files are copied, the following Confirmation window will appear:



In the event of an installation aborting error, please restart the installation by re-inserting the CD. Remember to select the opposite answer to the question in the Confirmation window.

Step 3 You will be prompted to restart your PC.



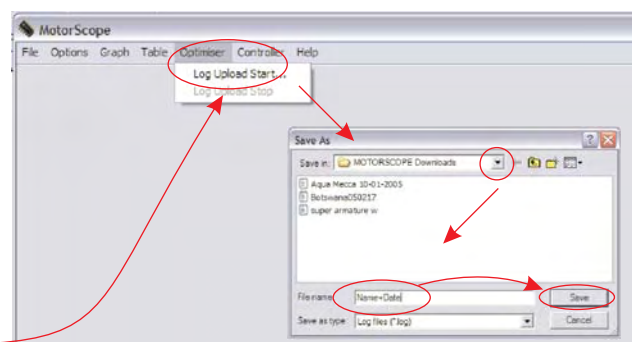
This shortcut icon will be placed on the Desktop and in the Start menu.

## Running the Motorscope Downloader software

- Step 1 Plug the Downloader into any USB port of the PC.
- Step 2 Plug the Optimizer into the "OPT" port of the Downloader unit.
- Step 3 Double-click on the "Downloader 2007" icon on the desktop.

## Uploading a Log File to the PC.

Step 1 Click on "Optimizer" and select "Log Upload Start". A window will appear where you can select the folder where the log file will be saved. Click here



Now select 'C:' then 'Program Files' then 'NIST' then 'Motorscope Downloader 2007' then 'Log Files'

NOTE: This is the default installation directory. If a different directory has been chosen, please select the 'Log Files' directory from that location.

Step 2 Name the log file for example: 'Log\_01-02-2007' and click on "Save".

NOTE: This log file contains up to 16 downloads.

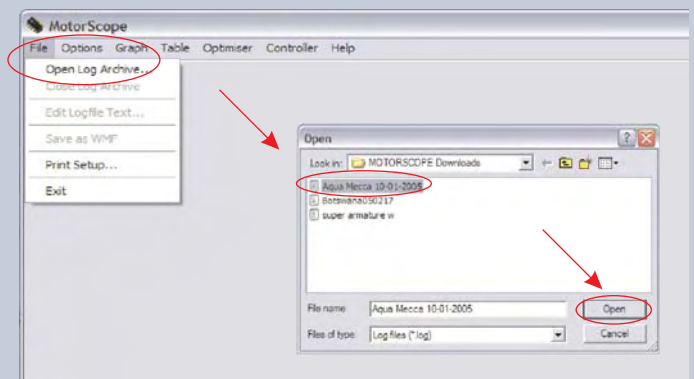
Step 3 A window will appear where you can edit the description of the log file. For example: 'Site Name and Date for Each Download'

The program will now automatically connect to the Optimizer and copy the downloads into the specified log file.

An "Info" window will inform you of a successful log upload.

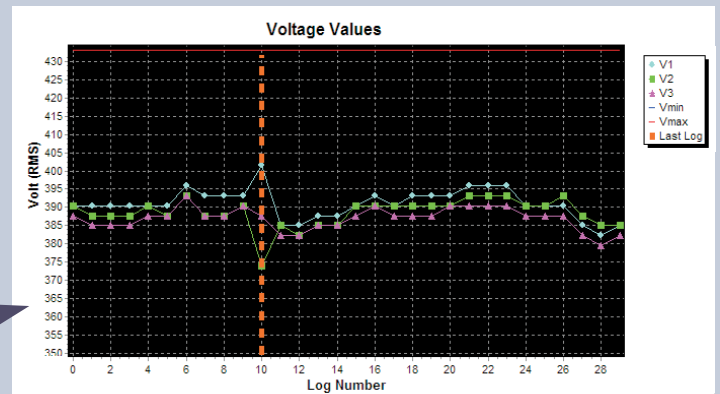
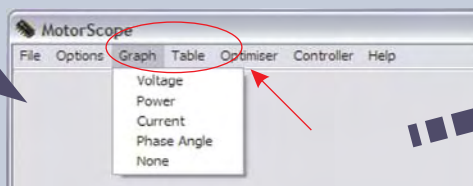
### Retrieving an Archived Log File

Select "File" from the Menu bar and "Open Log Archive". Select the saved file. The Log File can include a maximum of 16 downloads. To select the required download, go to "Options", select "Logfile Number" and from the table select the required number.



### To View Trip Data

Under the heading "Graph" select the graph of interest. The bottom indication is the trip number and the big dotted line indicates the last trip recorded. This means that the trip on the right of the dotted line is the oldest data.



The information of all the timers and the Aux input can be retrieved. Select "Table" and then "All".

